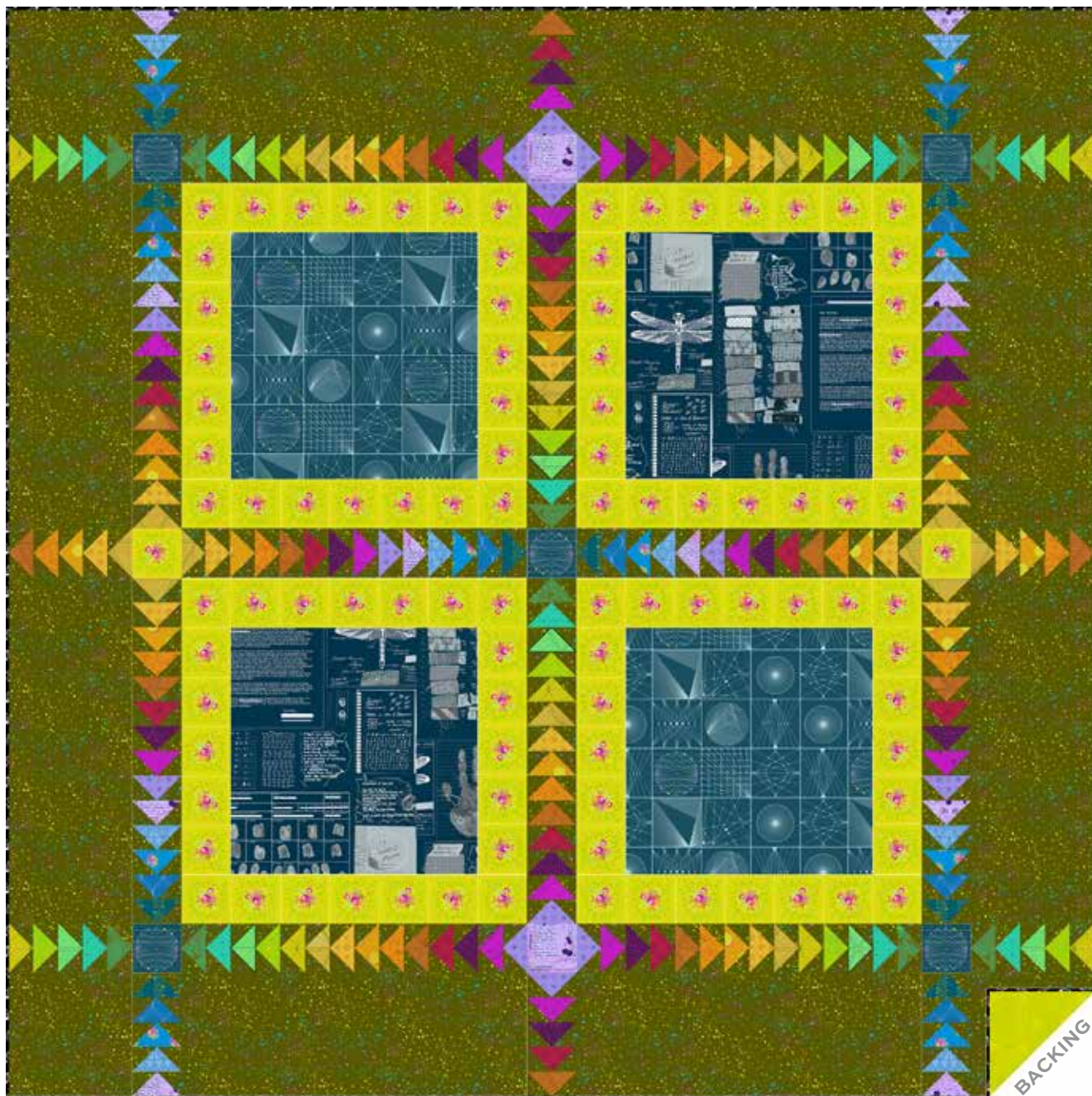


40 + 40 108s

GIUCY GIUCE



Bakula's Birthday Quilt designed by: **Giucy Giuce**
Quilt Size: **88" x 88"** • Skill Level: **Confident Beginner**

Bakula's Birthday Quilt

Introducing Andover Fabrics new collection: **40 + 40 108s** by Giucy Giuce

Quilt designed by Giucy Giuce

Quilt finishes **88" x 88"**

In 2025, Giucy Giuce will be turning 40. In lieu of a birthday party, he is presenting this collection featuring some of his favorite designs over the last seven years, as well as new designs that are reinterpretations of prints from his first collection, Quantum. The palette is a mashup of the colors used in those lines: gem tones, brights, and neons. The name of this quilt honors his Sicilian grandmother. He hopes that you feel the joy that he does when you use these fabrics.

Cutting Directions

Note: Read assembly directions before cutting patches. All measurements are cut sizes and include 1/4" seam allowances. A fat 1/4 is an 18" x 20"-22" cut. Borders are cut the exact lengths required plus 1/4" seam allowances. WOF designates the width of fabric from selvedge to selvedge (approximately 42" wide).

#1 Cut (8) strips 10 1/2" x 28 1/2"
Cut (4) squares 10 1/2"
Cut (456) squares 2 1/2" for Flying Geese (F.G.) corners

#3 Cut (16) rectangles 2 1/2" x 4 1/2" for F.G.

#22 Fussy-cut (8) strips 4 1/2" x 28 1/2" (Read Step 1 first)
Fussy-cut (8) strips 4 1/2" x 20 1/2"
Cut (2) squares 4 1/2"

#24 Cut (10) rectangles 2 1/2" x 4 1/2" for F.G.
Cut (2) squares 4 1/2"

#39 Cut (2) squares 20 1/2"
Cut (5) squares 4 1/2"

#40 Cut (2) squares 20 1/2"

9 Prints From each:
Cut (10) rectangles 2 1/2" x 4 1/2" for F.G.

8 Prints From each:
Cut (14) rectangles 2 1/2" x 4 1/2" for F.G.

#6 (Binding) Cut (10) strips 2 1/2" x WOF

#43 (Backing) Cut (1) length 98" x 98"

Making the Quilt

When making the blocks, refer to these labels and the list of fabrics on the last page of the pattern.

1 1344-VX	2 1391-G	3 1391-O
4 1391-Y	6 1392-K	7 1392-T
8 1393-B	10 1393-Y	11 1394-P
12 1394-R	13 1394-Y	15 1395-O
19 1396-O	20 1397-P	21 1398-V
22 1399-G	23 1400-P	24 1401-P
26 1403-T	27 1404-B	30 1406-G
38 1412-B	39 1413-B	40 1414-B
*43 AW-1515-G		

*From 40 108s

Fabric Requirements	Yardage
Fabric 1 border, F.G.	4 1/2 yards
Fabric 3 set	fat 1/4
Fabric 22 set	3 yards
Fabric 24 set	fat 1/4
Fab. 39 & 40 centers	3/4 yard each
9 Prints F.G.	fat 1/4 each
	2, 7, 8, 10, 21, 26, 27, 30, 38
8 Prints F.G.	fat 1/4 each
	4, 11, 12, 13, 15, 19, 20, 23
Fabric 6 (Binding)	3/4 yard
*Fabric 43 (Backing)	3 yards

*From 40 108

Bakula's Birthday Quilt

Making the Quilt

1. Fussy-cut Fabric 22 strips so that the printed flowers are centered. Sew the shorter strips to the sides of each Fabric 39 square. Sew longer strips to the top and bottom. Repeat with Fabric 40 squares to make 4 big blocks.
2. Fast Flying Geese are used in the sashes for this quilt. Draw a diagonal line on the back of all $2\frac{1}{2}$ " Fabric 1 squares. Position a marked square as shown on one end of a fabric $2\frac{1}{2}$ " x $4\frac{1}{2}$ " rectangle, right sides together (Diagram 1). Stitch on the marked diagonal line. Cut away the excess fabric. Press the corner up. Repeat this step on the opposite end of the rectangle (Diagram 2). Make 228 Flying Geese.
3. Refer to the Flying Geese figures. Join 14 appropriate Flying Geese units to make 6 F.G. 1 sashes and 6 F.G. 2 sashes. Join 5 appropriate Flying Geese to make 4 each of F.G. 3 and F.G. 4, and 2 each of F.G. 5 and F.G. 6.
4. Refer to the Quilt Assembly for the remaining directions. On a large flat surface, lay out the parts in 7 horizontal rows as shown, paying careful attention to the orientation of the Flying Geese sashes. Take note of how the Flying Geese sashes surround the $4\frac{1}{2}$ " squares. Once you are satisfied with the arrangement, join the parts into rows. Press seam allowances away from the Flying Geese sashes. Join the rows.

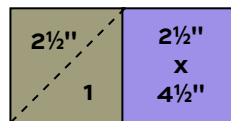


Diagram 1

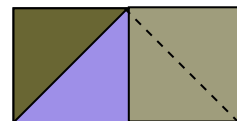
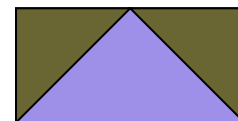
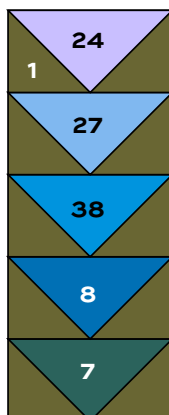


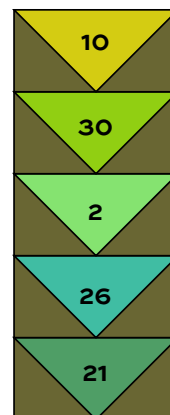
Diagram 2



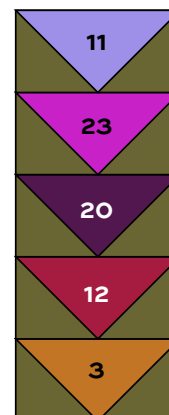
Flying Geese
Make 228



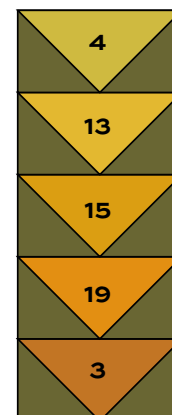
F.G. 3 - Make 4



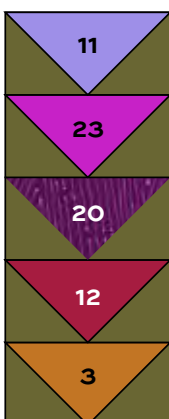
F.G. 4 - Make 4



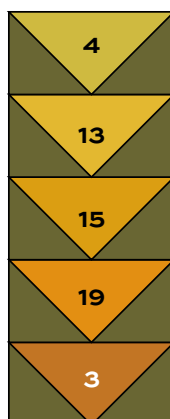
F.G. 1 - Make 6



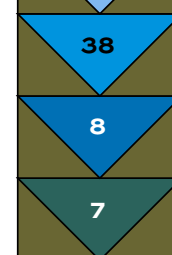
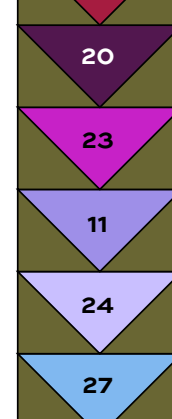
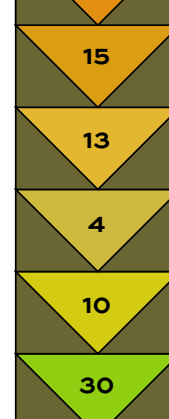
F.G. 2 - Make 6



F.G. 5 - Make 2



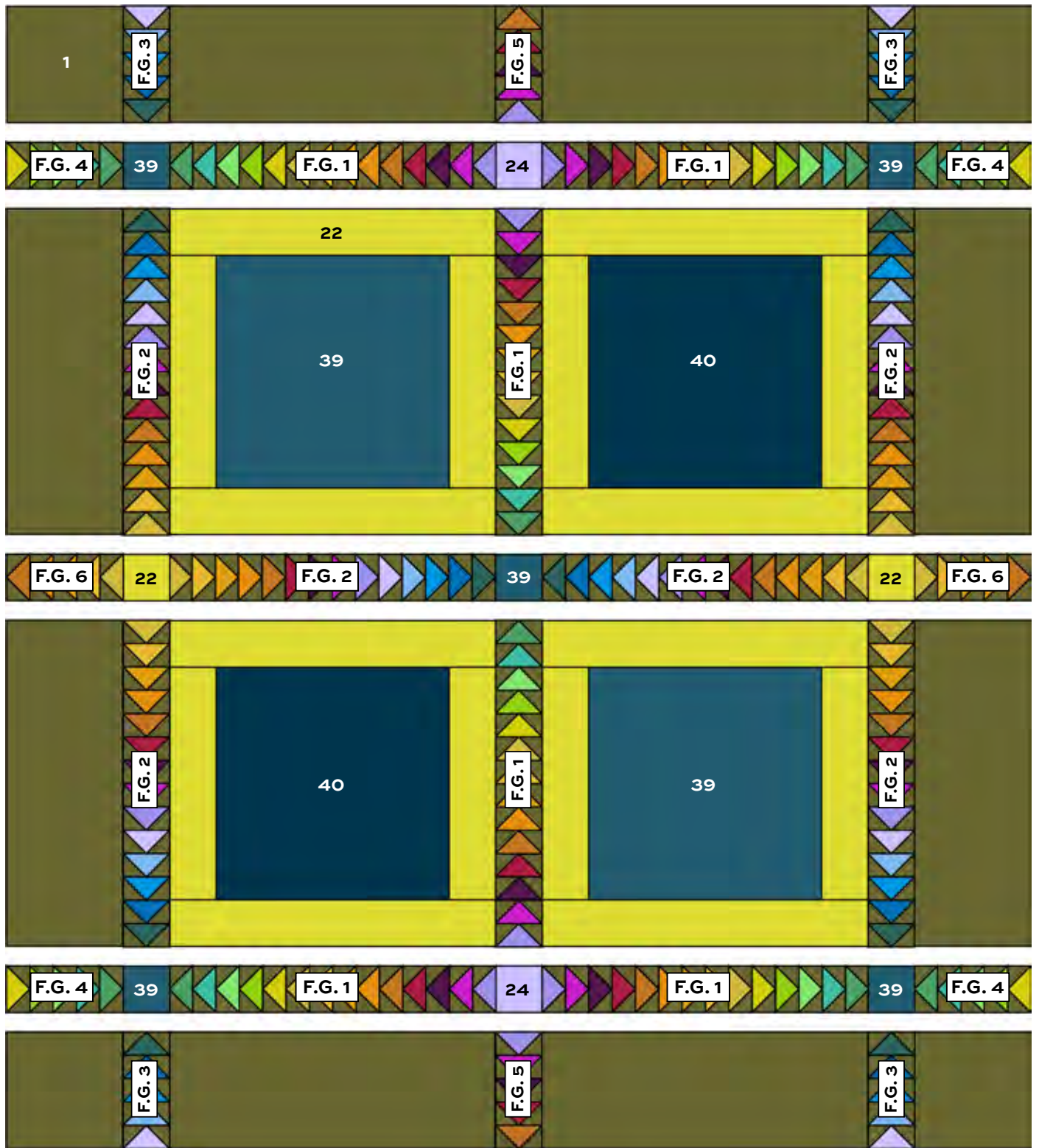
F.G. 6 - Make 2



Finishing the Quilt

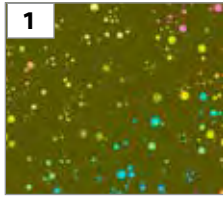
5. Layer the quilt with batting and backing and baste. Quilt in the ditch around sashes, block patches, and Flying Geese. Quilt around the printed motifs in the blocks. Quilt Fabric 1 patches as you wish. Bind to finish the quilt.

Bakula's Birthday Quilt

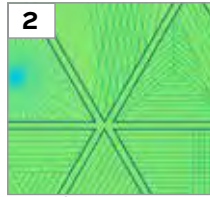


Quilt Assembly

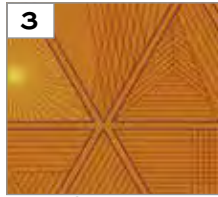
40 + 40 108S GIUCY GIUCE



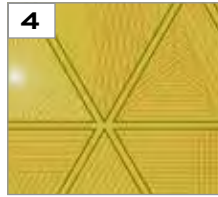
1344-VX



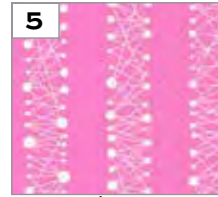
1391-G



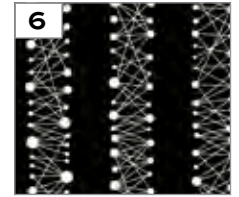
1391-O



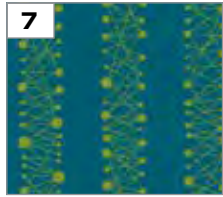
1391-Y



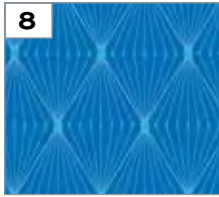
1392-E*



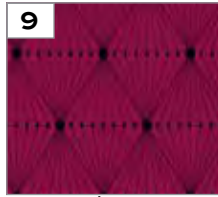
1392-K



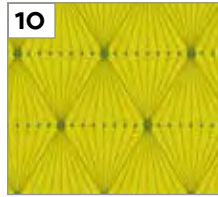
1392-T



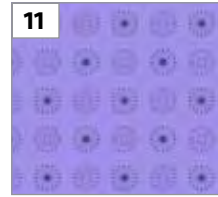
1393-B



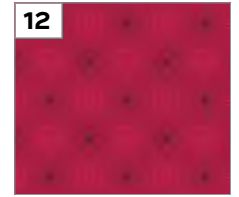
1393-R*



1393-Y



1394-P



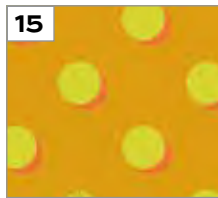
1394-R



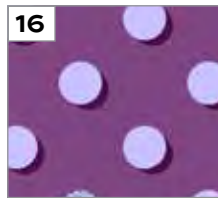
1394-Y



1395-B*



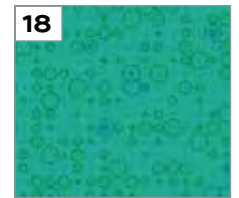
1395-O



1395-P*



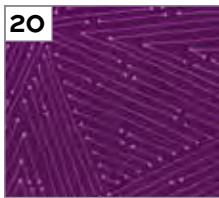
1396-B*



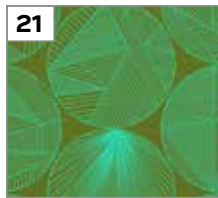
1396-G*



1396-O



1397-P



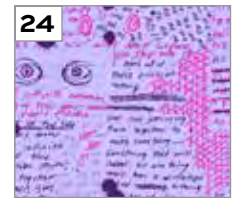
1398-V



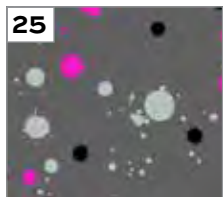
1399-G



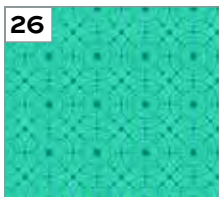
1400-P



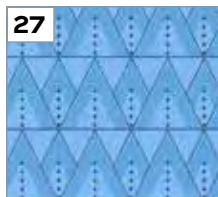
1401-P



1402-C*



1403-T



1404-B



1405-C*



1405-Y*



1406-G



1407-E*



1407-L*



1408-E*



1409-K*



1409-L*



1410-E*



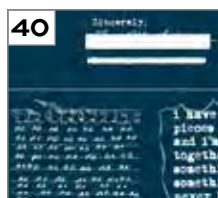
1411-R*



1412-B



1413-B



1414-B

*Indicates fabrics not used in quilt pattern.
Fabrics shown are 25% of actual size.

Additional fabric from 40 108s by Giucy Giuce



AW-1513-K*



AW-1414-E*



AW-1515-G

Free Pattern Download Available

1384 Broadway, 24th Floor, New York, NY 10018

Tel. (800) 223-5678 • andoverfabrics.com



40 + 40 108s

GIUCY GIUCE



Big 40 Quilt designed by: **Giucy Giuce**
Quilt Size: **64" x 64"** • Skill Level: **Advanced Beginner**

Big 40 Quilt

Introducing Andover Fabrics new collection:

40 + 40 108s by Giucy Giuce

Quilt designed by Giucy Giuce

Quilt finishes 64" x 64"

Jewel-colored triangles are stand-outs when surrounded by black in this striking wall quilt. The half-square triangles are so quick to make that you can use your time to fill the corner patches with your quilting skills.

Cutting Directions

Note: Read assembly directions before cutting patches. All measurements are cut sizes and include ¼" seam allowances. A fat ¼ is a 9" x 21"-22" cut of fabric. A fat ¼ is an 18" x 21"-22" cut. WOF designates the width of fabric from selvedge to selvedge (approximately 42" wide).

Fabric 34

Cut (4) squares 16½"

Cut (64) squares 5" (or 4⅞") for half-square triangles (HST) Read Step 1 before cutting.

Cut (56) squares 4½"

Fabric 15

Fussy-cut (1) square 8½" for center

Fabric 22

Cut (12) squares 5" (or 4⅞") for HST

Fabrics 2, 7, 18 From each:

Cut (8) squares 5" (or 4⅞") for HST

Fabrics 10, 30 From each:

Cut (6) squares 5" (or 4⅞") for HST

Fabrics 4, 21, 39, 40 From each:

Cut (4) squares 5" (or 4⅞") for HST

Fabrics 26, 29 From each:

Cut (4) squares 4½"

Binding

Cut (7) strips 2½" x WOF

Backing

Cut (1) length 74" x 74"

Making the Quilt

When making the blocks, refer to these labels and the list of fabrics on the last page of the pattern.

2 1391-G	4 1391-Y	7 1392-T	10 1393-Y
15 1395-O	18 1396-G	21 1398-V	22 1399-G
26 1403-T	29 1405-Y	30 1406-G	34 1409-K
39 1413-B	40 1414-B	42 AW-1514-E	

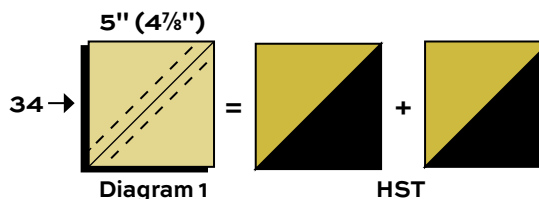
Fabric Requirements

Fabric	Requirements	Yardage
Fabric 34	backgrd.	3 yards
7 Fat ¼	HST	fat ¼ each
	Fabrics 2, 7, 10, 15, 18, 22, 30	
6 Fat ½	HST, set	fat ½ each
	Fabrics 4, 21, 26, 29, 39, 40	
#7 (Binding)		½ yard
*#42 (Backing)		2¼ yards

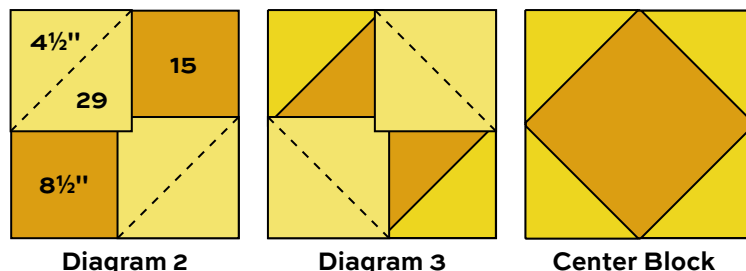
*From 40 108s by Giucy Giuce

Making the Quilt

- HST:** The quilt is made with half-square triangles (HST) that finish 4" square. Cutting squares 5" allows for trimming the HST after stitching. If you wish to eliminate this trimming step, cut 4⅞" squares for HST. Use your favorite method to make HST, or follow these directions. Draw a diagonal line on the wrong side of the bright 5" (4⅞") squares. Place a marked square on a Fabric 34 square, right sides together. Sew ¼" seam on each side of the marked line; cut apart on the marked line (Diagram 1). Press open to make pieced HST. Trim the squares to 4½" if needed. Make a total of 128 HST.



- Center Block:** Draw a diagonal line on the wrong side of the 4½" Fabric 29 squares. Position a marked square on one corner of the Fabric 15 square (Diagram 2). Stitch on the marked diagonal line. Cut away the excess fabric and press the corner up. Repeat this step on the opposite corner. Stitch 2 more Fabric 29 squares on the remaining corners (Diagram 3). Make 1 Center Block.

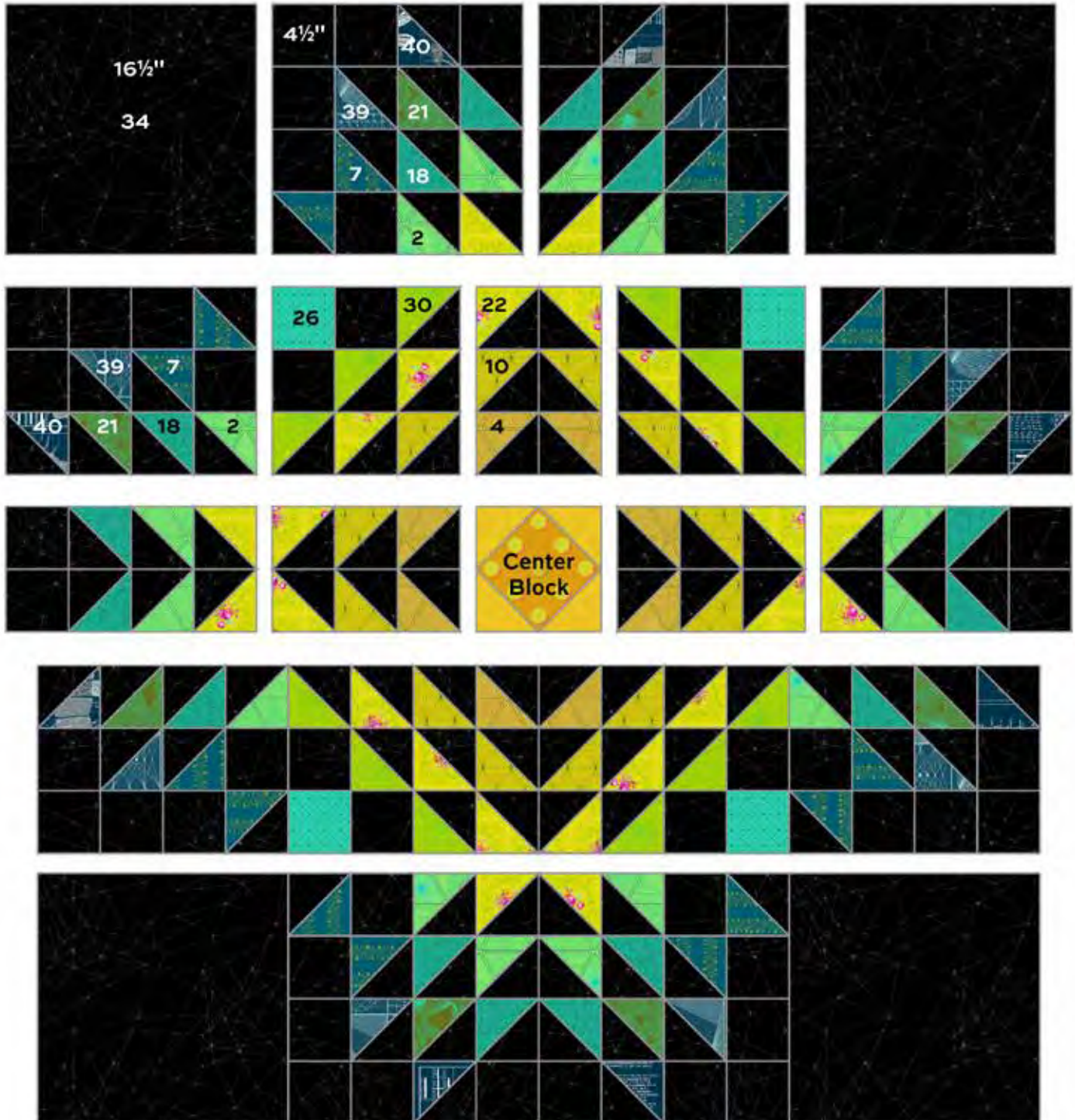


Big 40 Quilt

3. Referring to the Quilt Assembly, arrange the HST, Fabric 26 and Fabric 34 squares, and the Center Block into rows as shown. Rotate the HST to match the design. Stand back to be certain that all parts are in the correct position. Join the patches to make larger pieced units. Join these pieced units to make horizontal rows. Finally, join the rows.

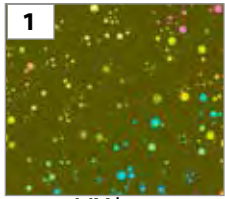
Finishing the Quilt

4. Layer the quilt with batting and backing and baste. Quilt in the ditch around block patches. Quilt the background patches as you wish. Bind to finish the quilt.

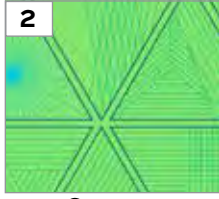


Quilt Assembly

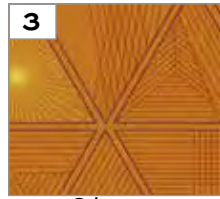
40 + 40 108S GIUCY GIUCE



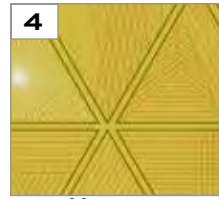
1344-VX*



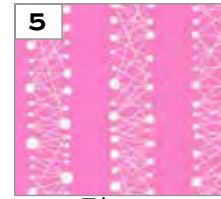
1391-G



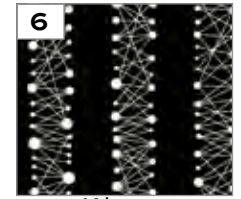
1391-O*



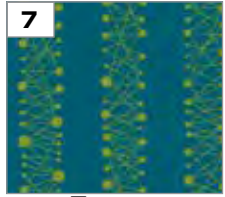
1391-Y



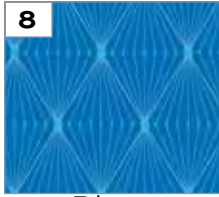
1392-E*



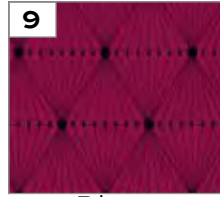
1392-K*



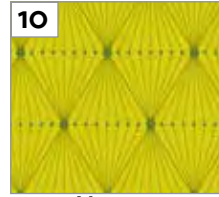
1392-T



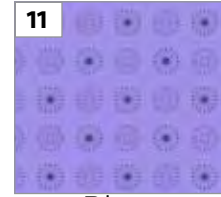
1393-B*



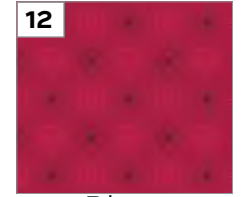
1393-R*



1393-Y



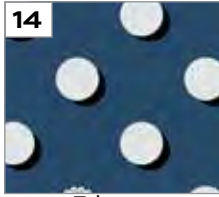
1394-P*



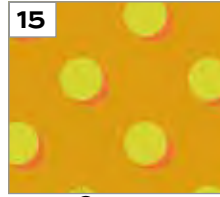
1394-R*



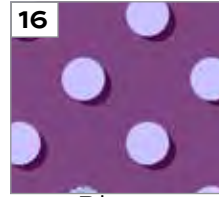
1394-Y*



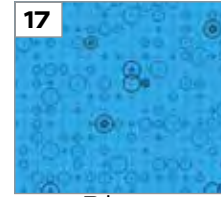
1395-B*



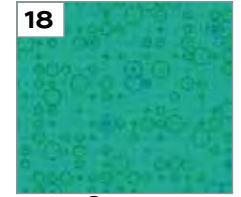
1395-O



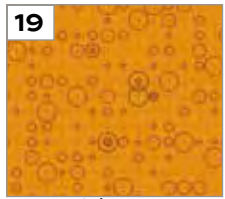
1395-P*



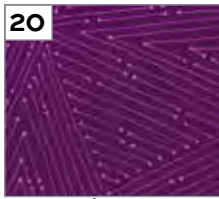
1396-B*



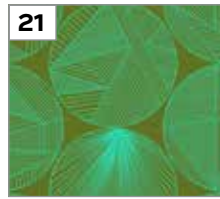
1396-G



1396-O*



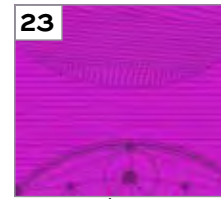
1397-P*



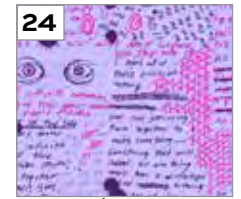
1398-V



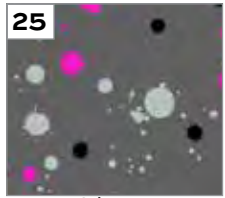
1399-G



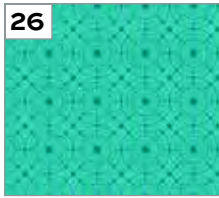
1400-P*



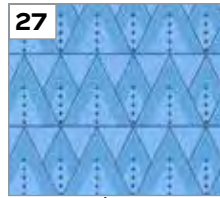
1401-P*



1402-C*



1403-T



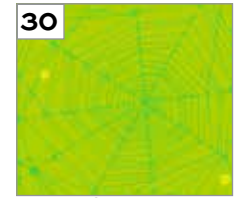
1404-B*



1405-C*



1405-Y



1406-G



1407-E*



1407-L*



1408-E*



1409-K



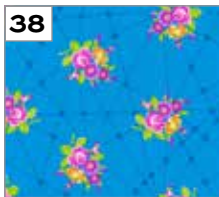
1409-L*



1410-E*



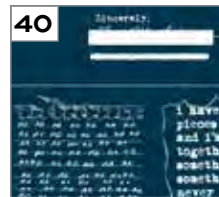
1411-R*



1412-B*



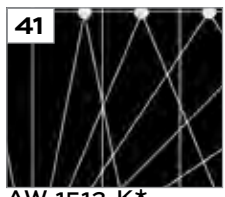
1413-B



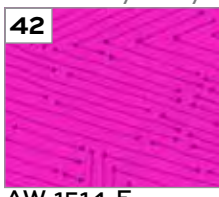
1414-B

*Indicates fabrics not used in quilt pattern.
Fabrics shown are 25% of actual size.

Additional fabric from 40 108s by Giucy Giuce



AW-1513-K*



AW-1514-E



AW-1515-G*

Free Pattern Download Available

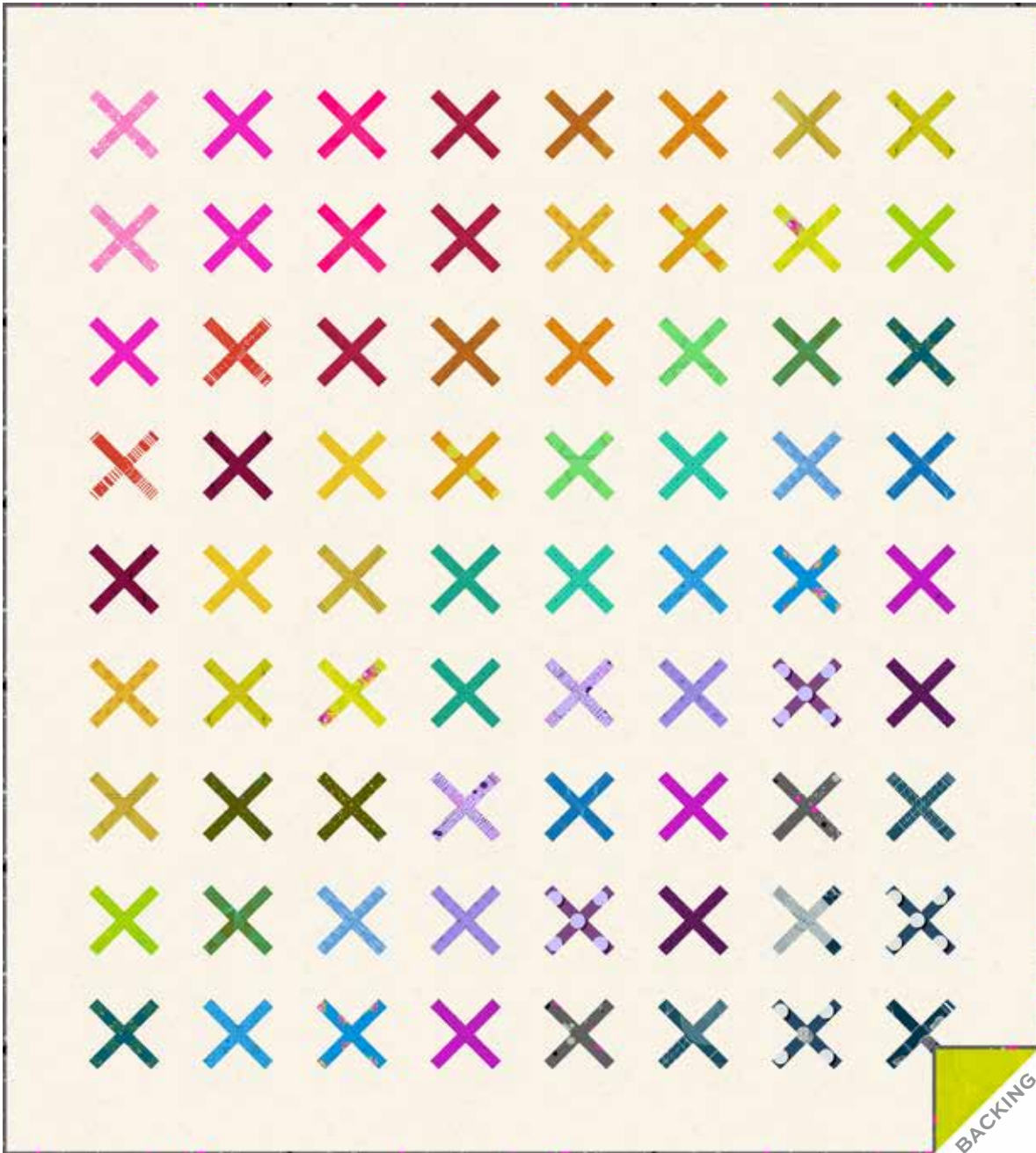
1384 Broadway, 24th Floor, New York, NY 10018

Tel. (800) 223-5678 • andoverfabrics.com



40 + 40 108s

GIUCY GIUCE



Confetti Quilt designed by: **Alison Glass**

Quilt Size: **68" x 75½"**

Skill Level: **Intermediate**

Confetti Quilt

Introducing Andover Fabrics new collection: **40 + 40 108s** by Giucy Giuce

Quilt designed by Alison Glass

Quilt finishes 68" x 75½"
72 Blocks finish 7½"

What a fun project for anyone who enjoys paper-foundation piecing. This machine method will ensure that your blocks are perfectly pieced. Feel free to arrange the blocks as shown or as you wish.

Cutting Directions

Note: Read assembly directions before cutting patches. All measurements are cut sizes and include ¼" seam allowances. A fat ⅛ is a 9" x 20"-22" cut of fabric. Borders are cut the exact lengths required plus ¼" seam allowances. WOF designates the width of fabric from selvedge to selvedge (approximately 42" wide).

Fabric 35

Cut (2) top/bottom borders 4½" x 68½",
cut lengthwise

Cut (2) side borders 4½" x 68"

Cut (72) squares 9", cut in half diagonally twice
to make 288 triangles for PFP

Cut (288) rectangles 1½" x 3½" for PFP

4 Brights 3 Blocks from each:

Cut (3) rectangles 1½" x 7" for paper-foundation
piecing (PFP) (Read Step 1 before cutting)

Cut (6) rectangles 1½" x 3½" for PFP

30 Brights 2 Blocks from each:

Cut (2) rectangles 1½" x 7" for PFP

Cut (4) rectangles 1½" x 3½" for PFP

Binding

Cut (8) strips 2½" x WOF for binding

Backing

Cut (1) length 78" x 86"

Making the Quilt

When making the blocks, refer to these labels and the list of fabrics on the last page of the pattern.

1 1344-VX **2** 1391-G **3** 1391-O **4** 1391-Y **5** 1392-E
7 1392-T **8** 1393-B **9** 1393-R **10** 1393-Y **11** 1394-P
12 1394-R **13** 1394-Y **14** 1395-B **15** 1395-O **16** 1395-P
17 1396-B **18** 1396-G **19** 1396-O **20** 1397-P **21** 1398-V
22 1399-G **23** 1400-P **24** 1401-P **25** 1402-C **26** 1403-T
27 1404-B **29** 1405-Y **30** 1406-G **31** 1407-E **35** 1409-L
36 1410-E **37** 1411-R **38** 1412-B **39** 1413-B **40** 1414-B
43 AW-1515-G

Fabric Requirements

Yardage

Fabric 35 set, border

7 yards

4 Brights blocks
Fabrics 4, 12, 23, 31

fat ⅛ each

30 Brights blocks

fat ⅛ each

Fabrics 1-3, 5, 7-11, 13-22, 24-27, 29-30, 36-40

Fab. 25 (Binding)

⅝ yard

Fab. 43 (Backing)

2½ yards

Making the Quilt

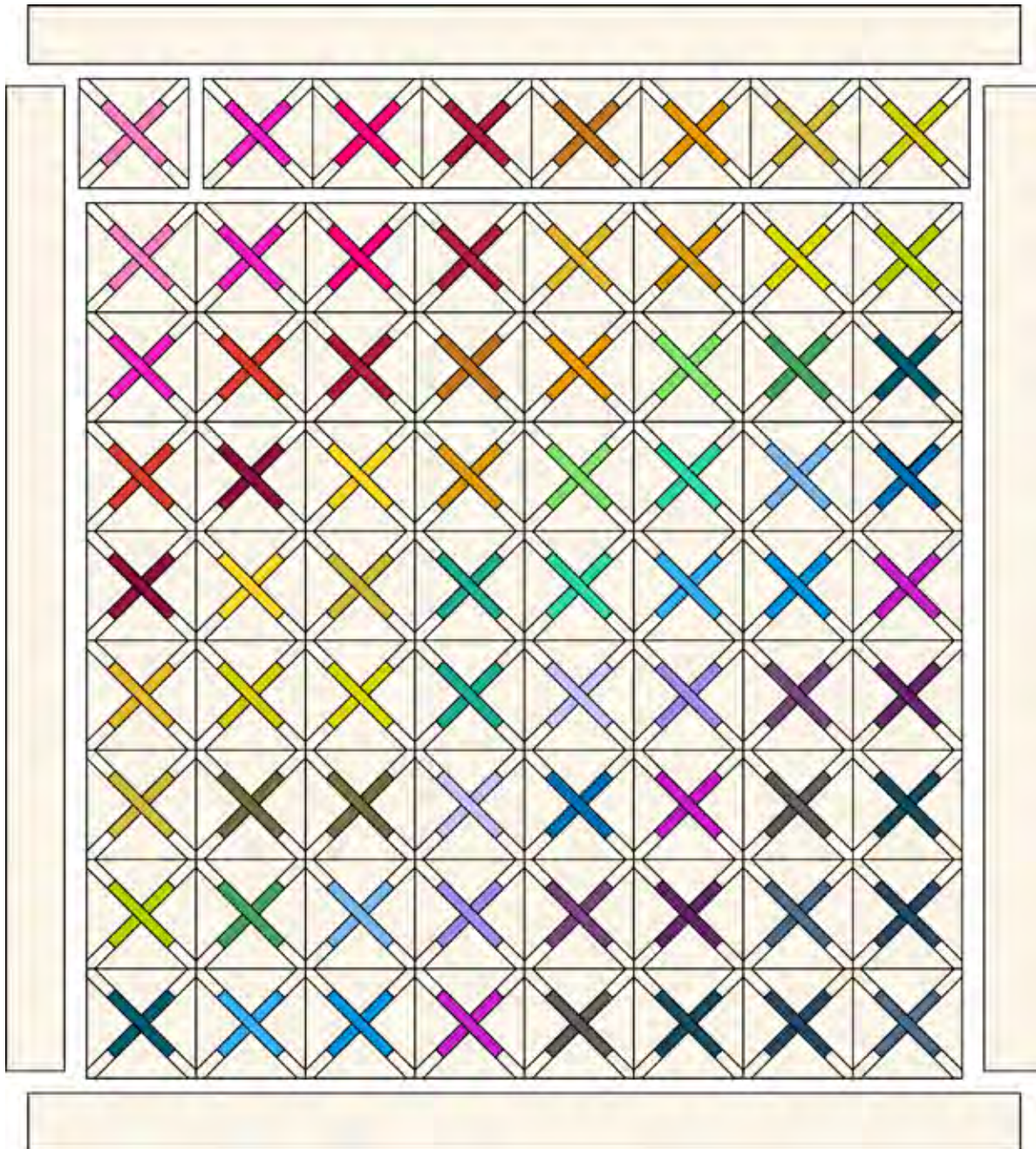
1. The blocks use paper-foundation piecing methods (PFP). You will make 2 or 3 blocks with each of the 33 bright prints. The cutting list includes the cut sizes of each patch for the PFP units. Cut patches for one block and follow directions to make the block. If the cut sizes of the patches are to your satisfaction, cut all patches those sizes. If you need them to be larger or smaller for PFP, cut them the sizes you need. Fabric 35 quarter-square triangles are used in patches 3 and 4. The 1½" x 3½" Fabric 35 rectangles are in patch 2. The longer colored strips are in patch 1 in the center unit, and the shorter strips are in patch 1 in the triangle units.
2. Photocopy or trace the PFP pattern 72 times. Hint: Paper made specifically for PFP or good quality tracing paper is ideal because it tears away easily. Be sure the printer is printing at 100%. Cut out the 3 different PFP units along the outer solid lines.
3. If you have not used the PFP method before, seek directions online or from a quilting book on the subject. Using PFP methods, join the patches in numerical order in each of the 3 units. Hint: Because the patches are larger, you might find it helpful to temporarily glue the fabric to the paper in a couple of places to secure while stitching. Use a shorter stitch length to make it easier to tear the paper away later. Be sure to stitch from edge to edge as indicated by the dashed lines. Trim the fabric even with the outer solid lines.

Confetti Quilt

4. Matching the sewing lines, pin a triangle unit to one side of the center unit. Stitch from edge to edge. Repeat to join the second triangle unit to the center. Press the block. Trim to 8" square, using the outer lines as a guide. Tear away the paper. Make 3 blocks with each of the 4 bright prints and 2 blocks with each of the 30 bright prints.
5. Refer to the Quilt Diagram and photograph to arrange the blocks in 9 rows of 8 blocks each, noting placement of all fabrics. Looking through a camera or the wrong end of binoculars may help you find mistakes. Once you are satisfied with the arrangement, join the blocks in rows, and then join the rows.
6. Sew the short Fabric 35 borders to the sides. Sew the longer borders to top and bottom.

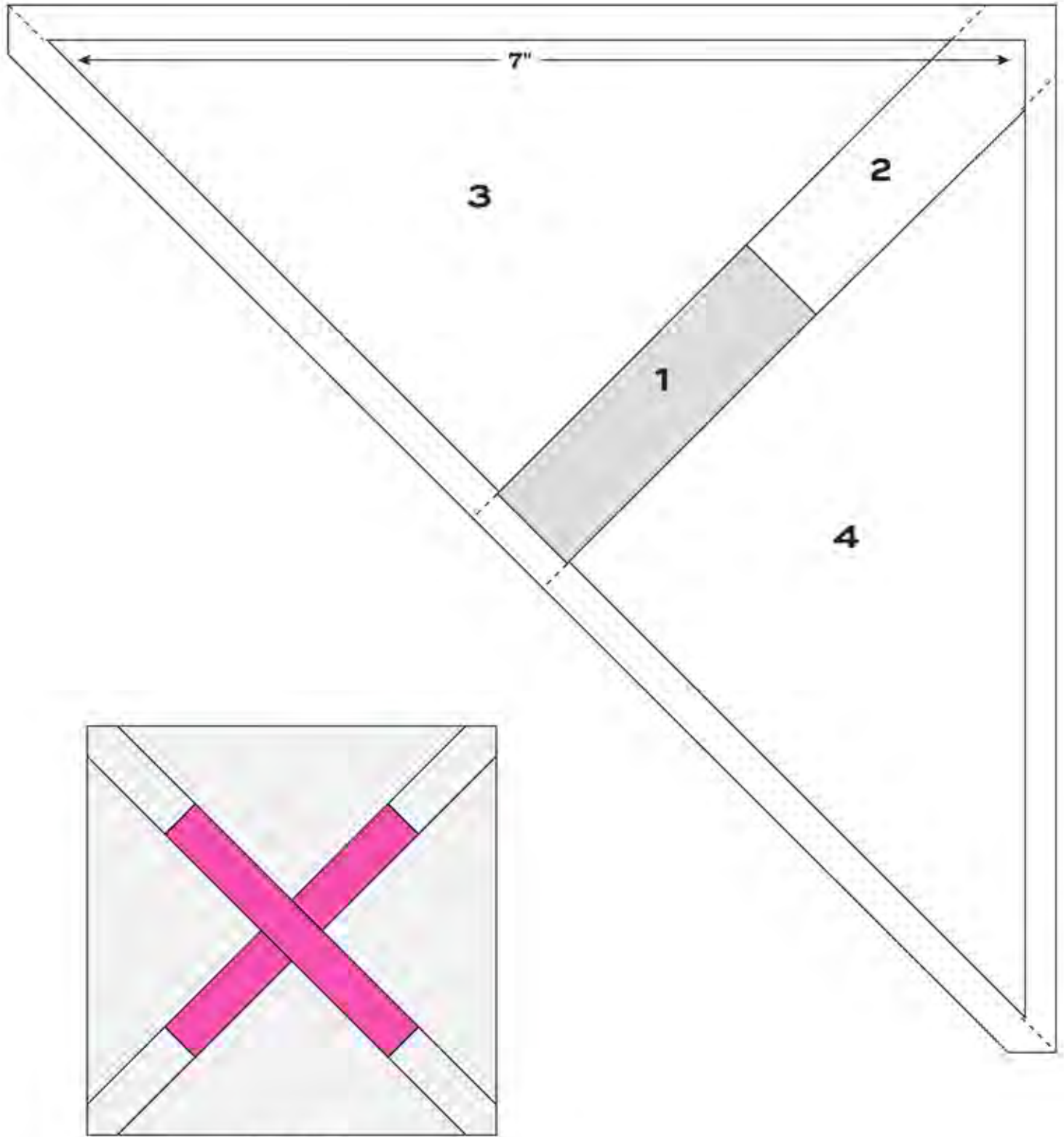
Finishing the Quilt

7. Layer the quilt with batting and backing and baste. Quilt in the ditch around borders and patches. Quilt inside the large triangles as you wish. Bind to finish the quilt.

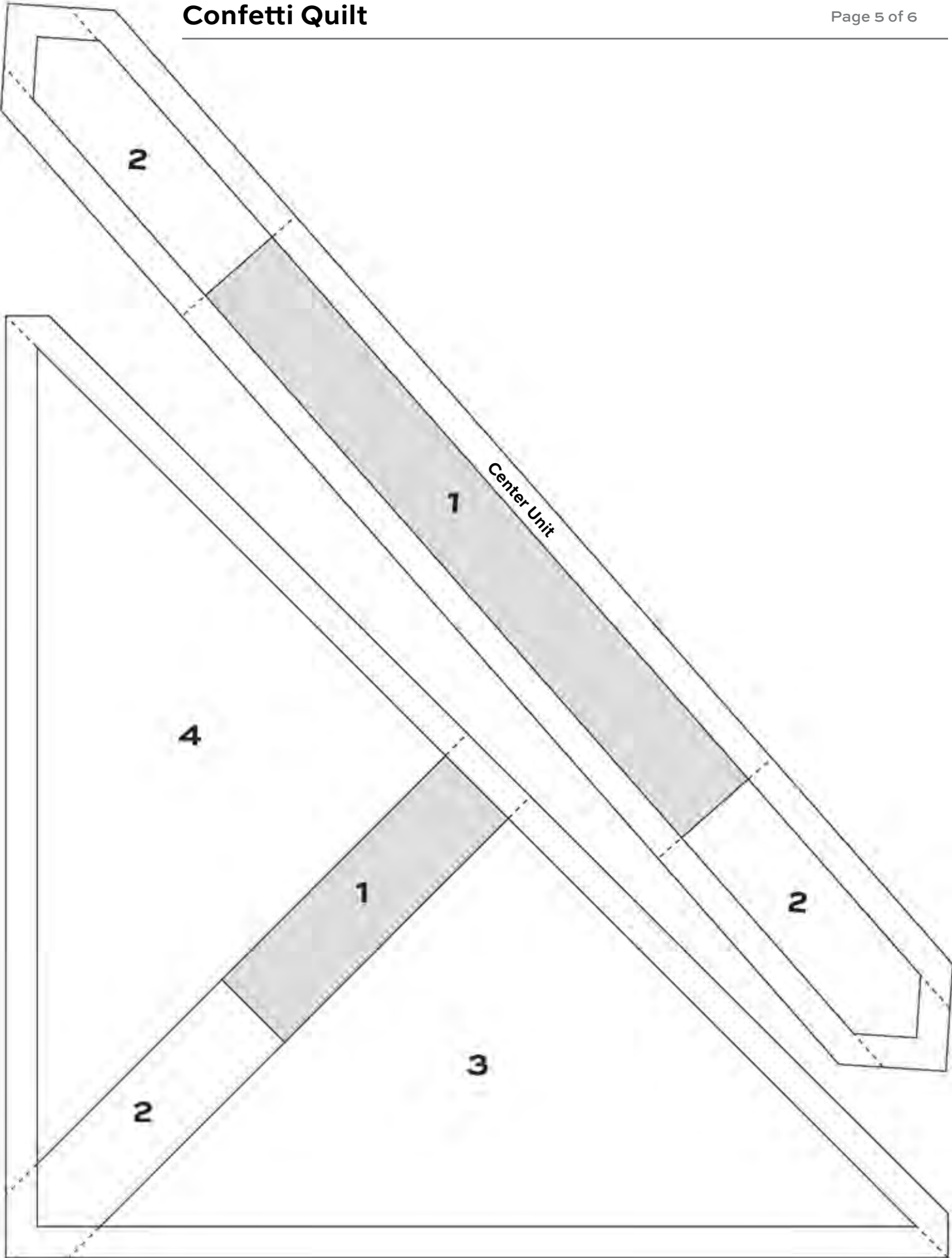


Quilt Assembly

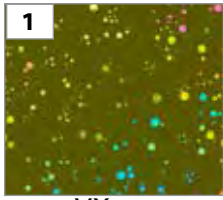
Confetti Quilt



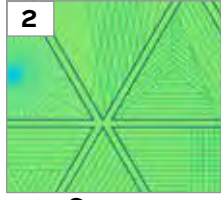
Quilt Block



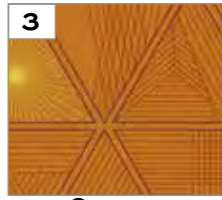
40 + 40 108s GIUCY GIUCE



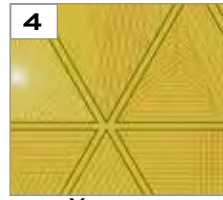
1344-VX



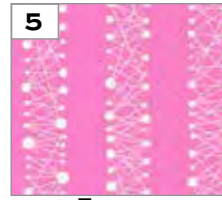
1391-G



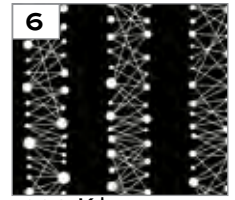
1391-O



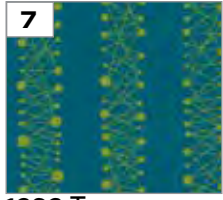
1391-Y



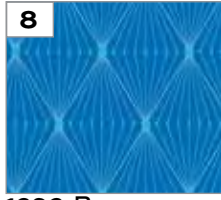
1392-E



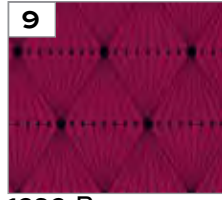
1392-K*



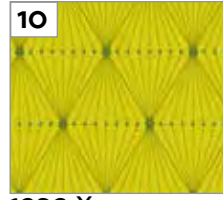
1392-T



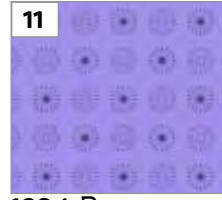
1393-B



1393-R



1393-Y



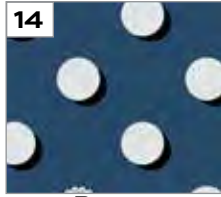
1394-P



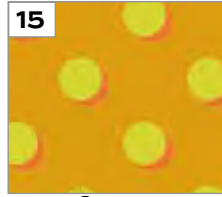
1394-R



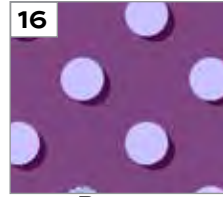
1394-Y



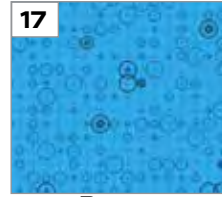
1395-B



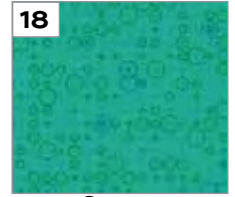
1395-O



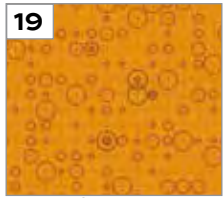
1395-P



1396-B



1396-G



1396-O



1397-P



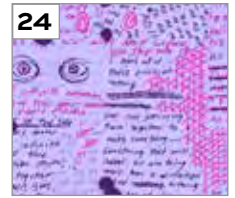
1398-V



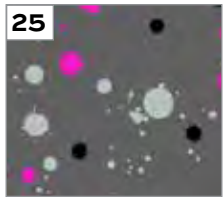
1399-G



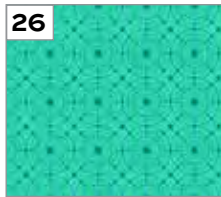
1400-P



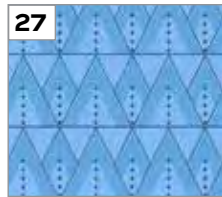
1401-P



1402-C*



1403-T



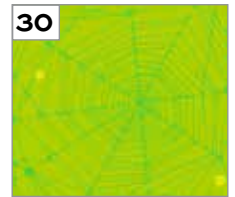
1404-B



1405-C*



1405-Y



1406-G



1407-E



1407-L*



1408-E*



1409-K*



1409-L



1410-E



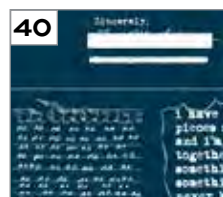
1411-R



1412-B



1413-B



1414-B

Indicates fabrics not used in quilt pattern.
Fabrics shown are 25% of actual size.

Additional fabric from **40 108s** by Giucy Giuce



AW-1513-K*



AW-1514-E*



AW-1515-G

Free Pattern Download Available

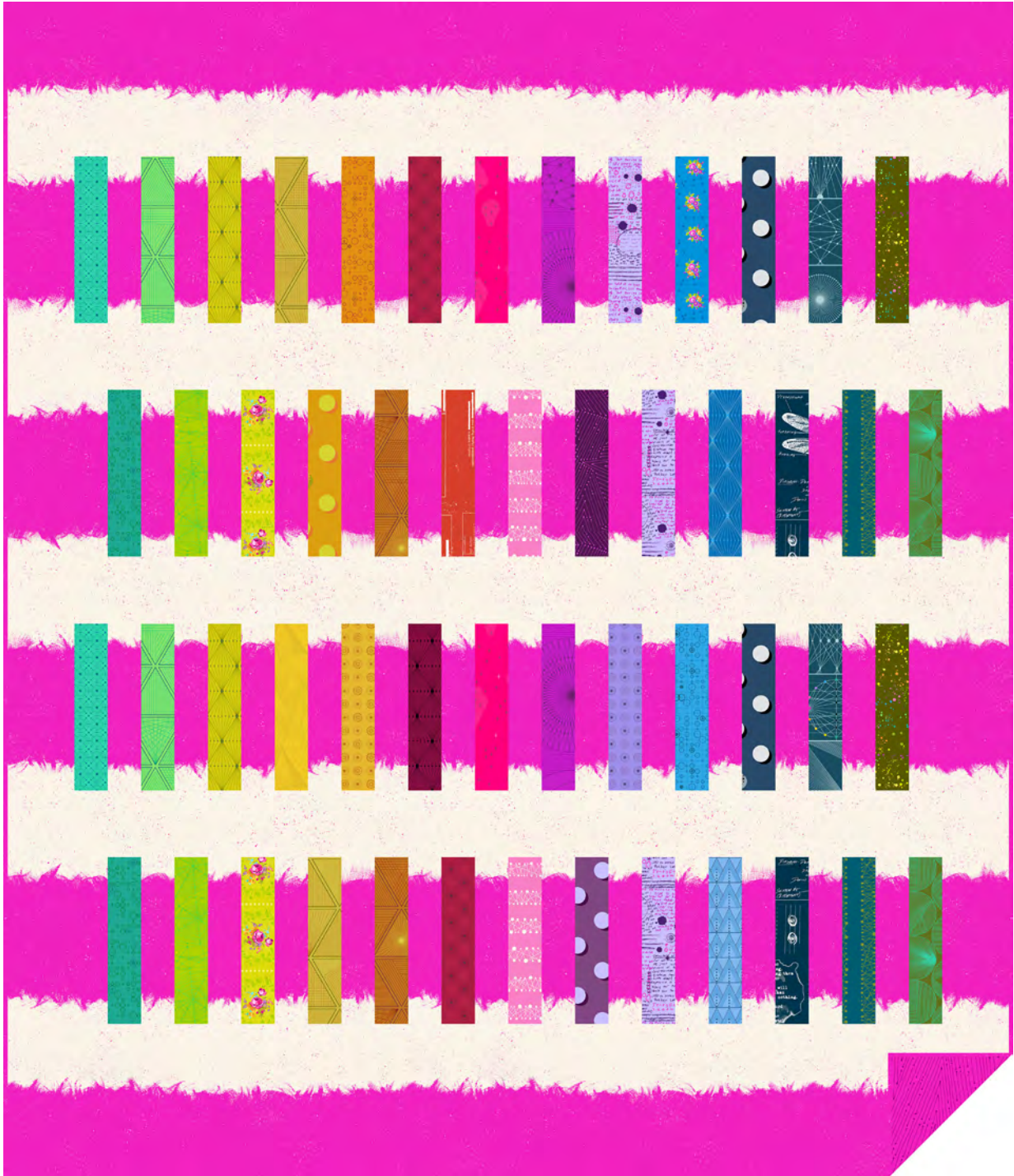
1384 Broadway, 24th Floor, New York, NY 10018

Tel. (800) 223-5678 • andoverfabrics.com



40 + 40 108s

GIUCY GIUCE



Crepe Paper Quilt designed by: **Giucy Giuce**

Quilt Size: **60" x 70"** • Skill Level: **Confident Beginner**

Free Pattern Download Available

1384 Broadway, 24th Floor, New York, NY 10018

Tel. (800) 223-5678 • andoverfabrics.com



Crepe Paper Quilt

Introducing Andover Fabrics new collection: 40 + 40 108s by Giucy Giuce

Quilt designed by Giucy Giuce

Quilt finishes 60" x 70"

What a fun opportunity to play with color! Follow the quilt diagram and photograph or rearrange the colored strips to echo your own design sensibilities. This is a perfect throw-size quilt for someone with little or no quilting experience, or for anyone in need of a quick project.

Cutting Directions

Note: Read assembly directions before cutting patches. All measurements are cut sizes and include ¼" seam allowances. A fat ¼ is a 9" x 20"-22" cut of fabric. Borders are cut the exact lengths required plus ¼" seam allowances. WOF designates the width of fabric from selvedge to selvedge (approximately 42" wide).

Fabric 32

Cut (5) strips 4½" x WOF, pieced to make the following:
(3) sashes 4½" x 60½"

Fabric 33

Fussy-cut (2) borders 9½" x 60½", cut lengthwise, half pink/half white as shown
Fussy-cut (48) rectangles 2½" x 10½", centering pink portion as shown
Fussy-cut (4) rectangles 6½" x 10½", centering pink portion as shown
Fussy-cut (4) rectangles 4½" x 10½", centering pink portion as shown

32 Prints

From each:
Cut (1 or 2) rectangles 2½" x 10½" (52 total), referring to Quilt Assembly for number to cut, or feel free to change the number of each fabric.
(Note: Fabric 24 is used in 3 rectangles)

Binding (31)

Cut (7) strips 2½" x WOF for binding

Backing

Cut (1) length 70" x 80"

Making the Quilt

When making the blocks, refer to these labels and the list of fabrics on the last page of the pattern.

1 1344-VX	2 1391-G	3 1391-O	4 1391-Y
5 1392-E	7 1392-T	8 1393-B	9 1393-R
10 1393-Y	11 1394-P	12 1394-R	13 1394-Y
14 1395-B	15 1395-O	16 1395-P	17 1396-B
18 1396-G	19 1396-O	20 1397-P	21 1398-V
22 1399-G	23 1400-P	24 1401-P	26 1403-T
27 1404-B	29 1405-Y	30 1406-G	31 1407-E
32 1407-L	33 1408-E	36 1410-E	37 1411-R
38 1412-B	39 1413-B	40 1414-B	42 1514-E

Fabric Requirements

Fabric	Requirements	Yardage
Fabric 32	sashes	¾ yard
Fabric 33	border	4½ yards
32 Prints	set	fat ¼ each
	Fabrics 1-5, 7-24, 26, 27, 29, 30, 36-40	
Binding (31)		⅝ yard
Backing (42)		2 yards

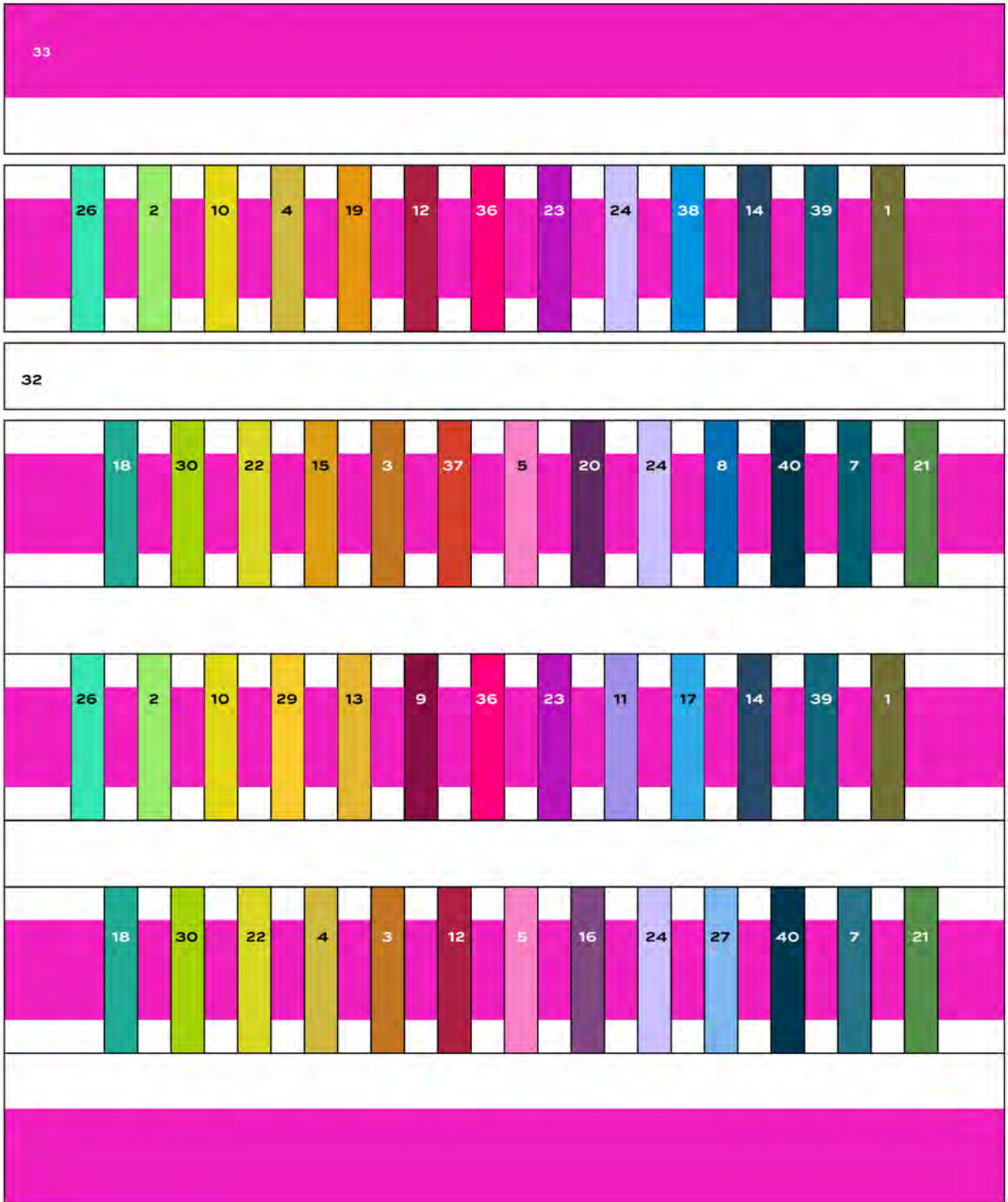
Making the Quilt

1. Referring to the Quilt Diagram, arrange the 52 colored rectangles in 4 horizontal rows, placing a Fabric 33 rectangle between each. On rows 1 and 3, position a 4½" x 10½" Fabric 33 rectangle on the left end and a 6½" x 10½" rectangle on the right end. On rows 2 and 4, reverse the placement of the end rectangles.
2. Once you are satisfied with the color placement, join the rectangles to make 4 rows. Press seam allowances toward the colored strips.
3. Sew the 4½" -wide sashes between the rows.
4. Finally, sew the 9½" borders to the top and bottom.

Finishing the Quilt

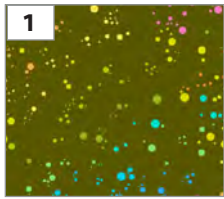
5. Layer the quilt with batting and backing and baste. Quilt in the ditch around borders and patches, or quilt an overall pattern. Bind to finish the quilt.

Crepe Paper Quilt

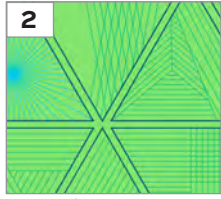


Quilt Assembly

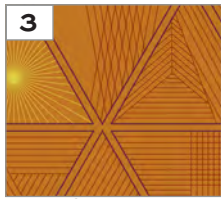
40 + 40 108S GIUCY GIUCE



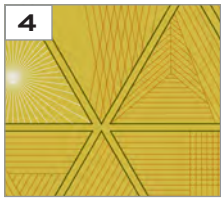
1344-VX



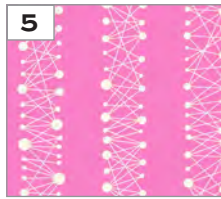
1391-G



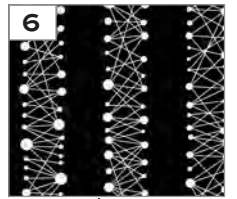
1391-O



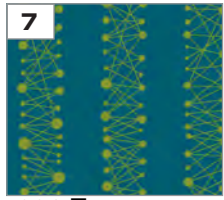
1391-Y



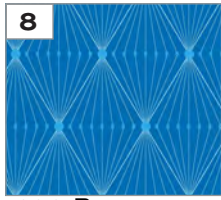
1392-E



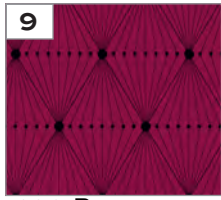
1392-K*



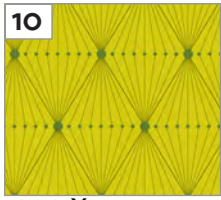
1392-T



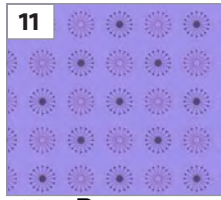
1393-B



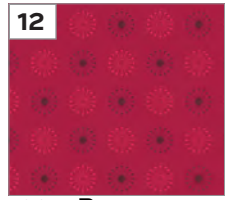
1393-R



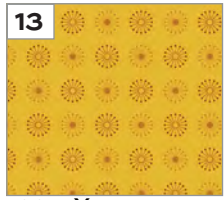
1393-Y



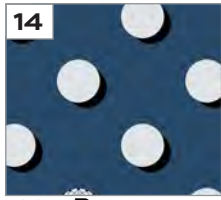
1394-P



1394-R



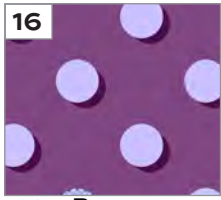
1394-Y



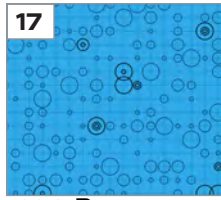
1395-B



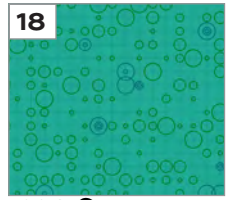
1395-O



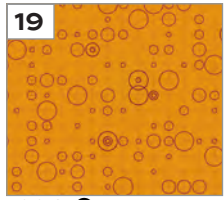
1395-P



1396-B



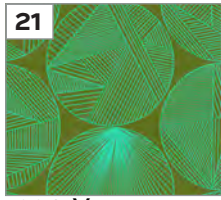
1396-G



1396-O



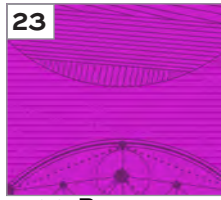
1397-P



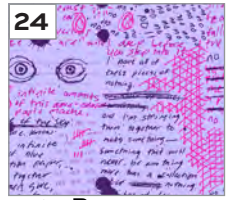
1398-V



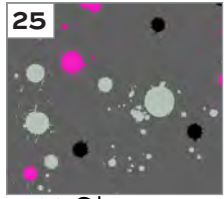
1399-G



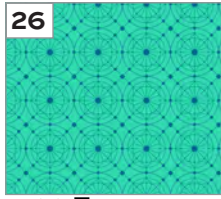
1400-P



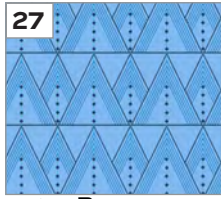
1401-P



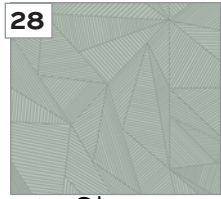
1402-C*



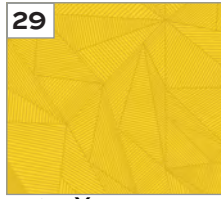
1403-T



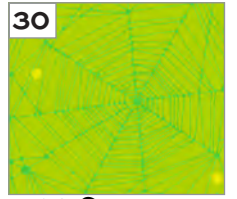
1404-B



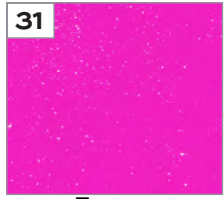
1405-C*



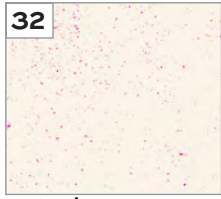
1405-Y



1406-G



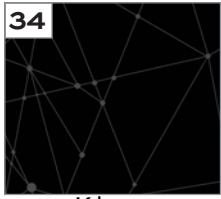
1407-E



1407-L



1408-E



1409-K*



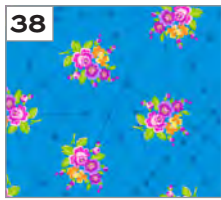
1409-L*



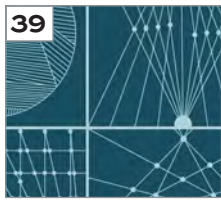
1410-E



1411-R



1412-B



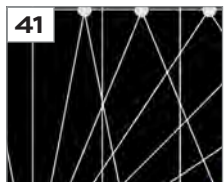
1413-B



1414-B

*Indicates fabrics not used in quilt pattern.
Fabrics shown are 25% of actual size.

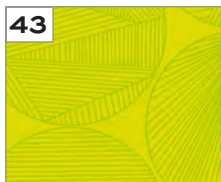
Additional fabric from 40 108s by Giucy Giuce



AW-1513-K*



AW-1514-E



AW-1515-G*

Free Pattern Download Available

1384 Broadway, 24th Floor, New York, NY 10018

Tel. (800) 223-5678 • andoverfabrics.com

 andover : makower uk

40 + 40 108s

GIUCY GIUCE



L.F. Party Quilt designed by: **Giucy Giuce**

Quilt Size: **72" x 72"** • Skill Level: **Intermediate**

L.F. Party Quilt

Introducing Andover Fabrics new collection: **40 + 40 108s** by Giucy Giuce

Quilt designed by Giucy Giuce

Quilt finishes 72" x 72"

This medallion-style quilt would look stunning on a wall or as a topper. The fabrics are an interesting mixture from several fabric lines that Giucy Giuce has designed over the past years. Some sewing experience will be useful when stitching the center curved patches.

Cutting Directions

Note: Read assembly directions before cutting patches. All measurements are cut sizes and include ¼" seam allowances. A fat ⅛ is a 9" x 20"-22" cut of fabric. A fat ¼ is an 18" x 20"-22" cut. Inner borders are cut the exact lengths required plus ¼" seam allowances. Outer borders include extra length for mitered corners. WOF designates the width of fabric from selvedge to selvedge (approximately 42" wide).

Fabric 23

Cut (4) Template 1 (T1)
Cut (8) rectangles 2½" x 6½" for pieced strips border
Cut (8) rectangles 2½" x 4½" for Flying Geese (F.G.)

Fabric 31

Cut (224) squares 2½" for F.G. corners

Fabric 32

Cut (4) rectangles 6½" x 12½" for center background
Cut (4) squares 4½" for center background
Cut 12 Template 2 (T2)

Fabric 33

Fussy-cut (4) outer borders 4½" x 74", cut lengthwise (Read Step 1 before cutting.)
Fussy-cut (4) middle borders 4½" x 48½"
Fussy-cut (4) squares 4½" (Read Step 1 before cutting.)

Fabric 16

Cut (8) T1
Cut (8) rectangles 2½" x 6½" for pieced strips border
Cut (8) rectangles 2½" x 4½" for F.G.

Fabric 20

Cut (12) T1
Cut (8) rectangles 2½" x 6½" for pieced strips border
Cut (8) rectangles 2½" x 4½" for F.G.

Making the Quilt

When making the blocks, refer to these labels and the list of fabrics on the last page of the pattern.

3 1391-O	4 1391-Y	5 1392-E	9 1393-R
11 1394-P	12 1394-R	13 1394-Y	15 1395-O
16 1395-P	19 1396-O	20 1397-P	23 1400-P
24 1401-P	29 1405-Y	31 1407-E	32 1407-L
33 1408-E	36 1410-E	37 1411-R	41 AW-1513-K

Fabric Requirements

Fabric	Requirements	Yardage
Fabric 23	set	½ yard
Fabric 31	F.G.	1¼ yards
Fabric 32	set	1 yard
Fabric 33	borders	¾ yards
3 Prints	set	¾ yard each
	16, 20, 24	
6 Fat ¼	set	fat ¼ each
	3, 4, 9, 12, 29, 37	
6 Fat ⅛	set	fat ⅛ each
	5, 11, 13, 15, 19, 36	
Fabric 20 (Binding)		⅝ yard
*Fabric 41 (Backing)		2½ yards

*From 40 108s by Giucy Giuce

Fabric 24

Cut (12) T2
Cut (4) squares 6½"
Cut (4) squares 4½"

Fabrics 3, 9, 12, 37

From each:
Cut (8) rectangles 2½" x 6½" for pieced strips border
Cut (8) rectangles 2½" x 4½" for F.G.

Fabrics 4, 29

From each:
Cut (4) rectangles 2½" x 6½" for pieced strips border
Cut (8) rectangles 2½" x 4½" for F.G.

Fab. 5, 11, 15, 19, 36

From each:
Cut (8) rectangles 2½" x 4½" for F.G.

Fabric 13

Cut (8) rectangles 2½" x 6½" for pieced strips border

Fabric 20

(Binding)
Cut (8) strips 2½" x WOF

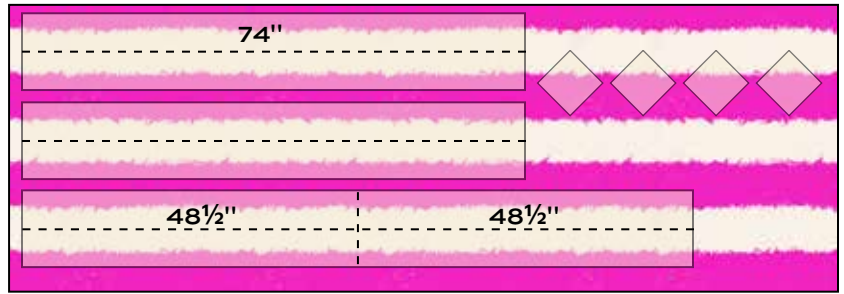
Fabric 41

(Backing)
Cut (1) length 82" x 82"

L.F. Party Quilt

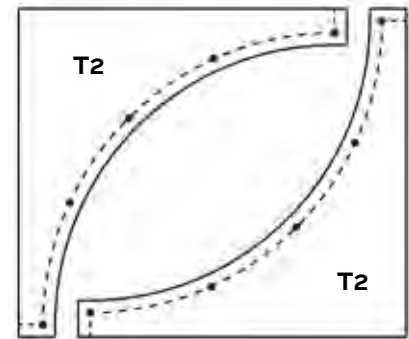
Making the Quilt

1. Fabric 33 is used in the outer and middle borders, as well as the $4\frac{1}{2}$ " border corners. Refer to the cutting diagram. Note that two borders share the same pink stripe. Hint: Cut down the centers of the white stripes, and then measure from that cut edge to obtain the width and lengths needed. The $4\frac{1}{2}$ " squares are cut "on point" to allow the pink portion to form the design as shown.



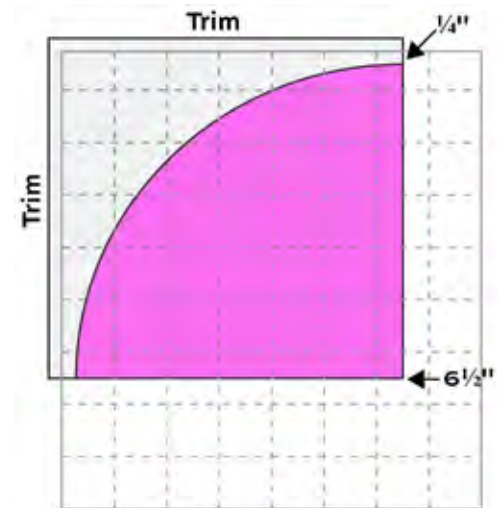
Fabric 33 Cutting

2. Conserve fabric by cutting Template 2 patches as shown in the cutting Diagram 1. Make acrylic templates of T1 and T2, including the dots. Poke holes through the template at each dot with an ice pick. Mark the dots on the back side of fabric patches.



Cutting - Diagram 1

Pin a T2 patch on top of a T1, matching dots and ends. Pin every inch or so along the curve. Stitch in a $\frac{1}{4}$ " seam allowance. Press seam allowances toward T1. Trim each block to $6\frac{1}{2}$ " square: Position the $6\frac{1}{2}$ " mark of the acrylic ruler on the corner of T1 as shown in Diagram 2. Trim T2 along the opposite edges. Be sure that a $\frac{1}{4}$ " seam allowance remains beyond the T1/T2 seam. Referring to the Quilt Assembly for fabric combinations, make 24 blocks.



Trimming Block - Diagram 2

- Referring to the Quilt Assembly, arrange the blocks from Step 2 and Fabric #32 patches in 6 rows. Join the rows.
- Arrange the $2\frac{1}{2}$ " x $6\frac{1}{2}$ " strips around the quilt in the order shown. Stand back to be certain the fabrics are in the correct order. Once you are satisfied with the arrangement, join the strips to make 4 borders alike. Sew borders to opposite sides of the quilt. Sew Fabric #24 squares to ends of remaining 2 borders. Sew to the top and bottom.
- Sew Fabric #33 borders to opposite sides. Join Fabric #33 squares to ends of remaining borders, rotating the squares as shown. Sew to the top and bottom.
- Flying Geese: Draw a diagonal line on the wrong side of each Fabric #31 square. Hint: After making a few Flying Geese, you may feel confident enough to eliminate the diagonal line and stitch the squares "by eye." Place a marked square on one end of a $2\frac{1}{2}$ " x $4\frac{1}{2}$ " rectangle, right sides together. Sew on the marked line; trim away and discard excess fabric (Diagram 3). Press open. Repeat this process on the opposite end of the rectangle (Diagram 4) to make a Flying Geese Unit. Make 112 total.

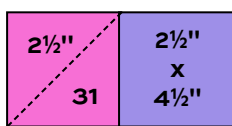


Diagram 3

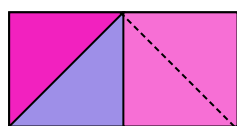
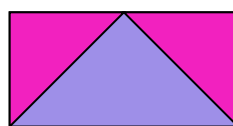
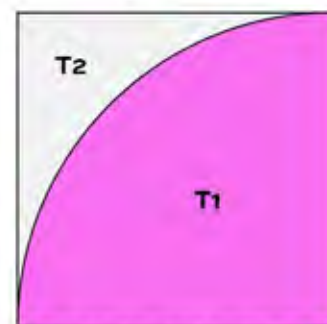


Diagram 4



Flying Geese
Make 112



Block - Make 24

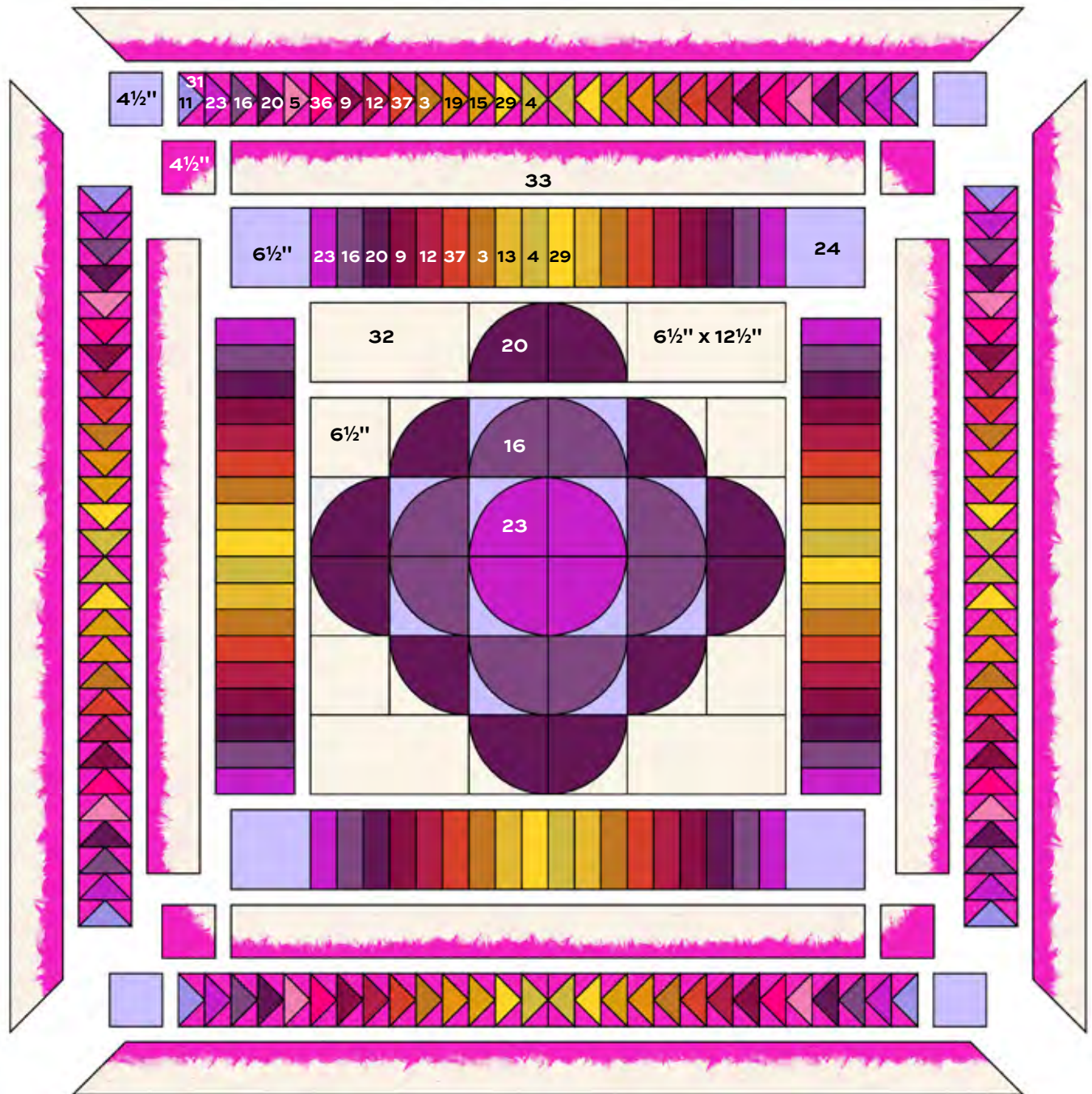
L.F. Party Quilt

7. Referring to the Quilt Assembly, arrange 28 Flying Geese on each side of the quilt, noting change of direction in the center of each border. Once you are satisfied with the color arrangement, join the geese to make 4 borders. Sew to opposite sides of the quilt. Join a Fabric #24 square to ends of remaining borders. Sew to the top and bottom.

8. Sew Fabric #33 borders to the quilt, starting and stopping stitching $\frac{1}{4}$ " from the quilt's raw edge. Miter the corners and trim the excess.

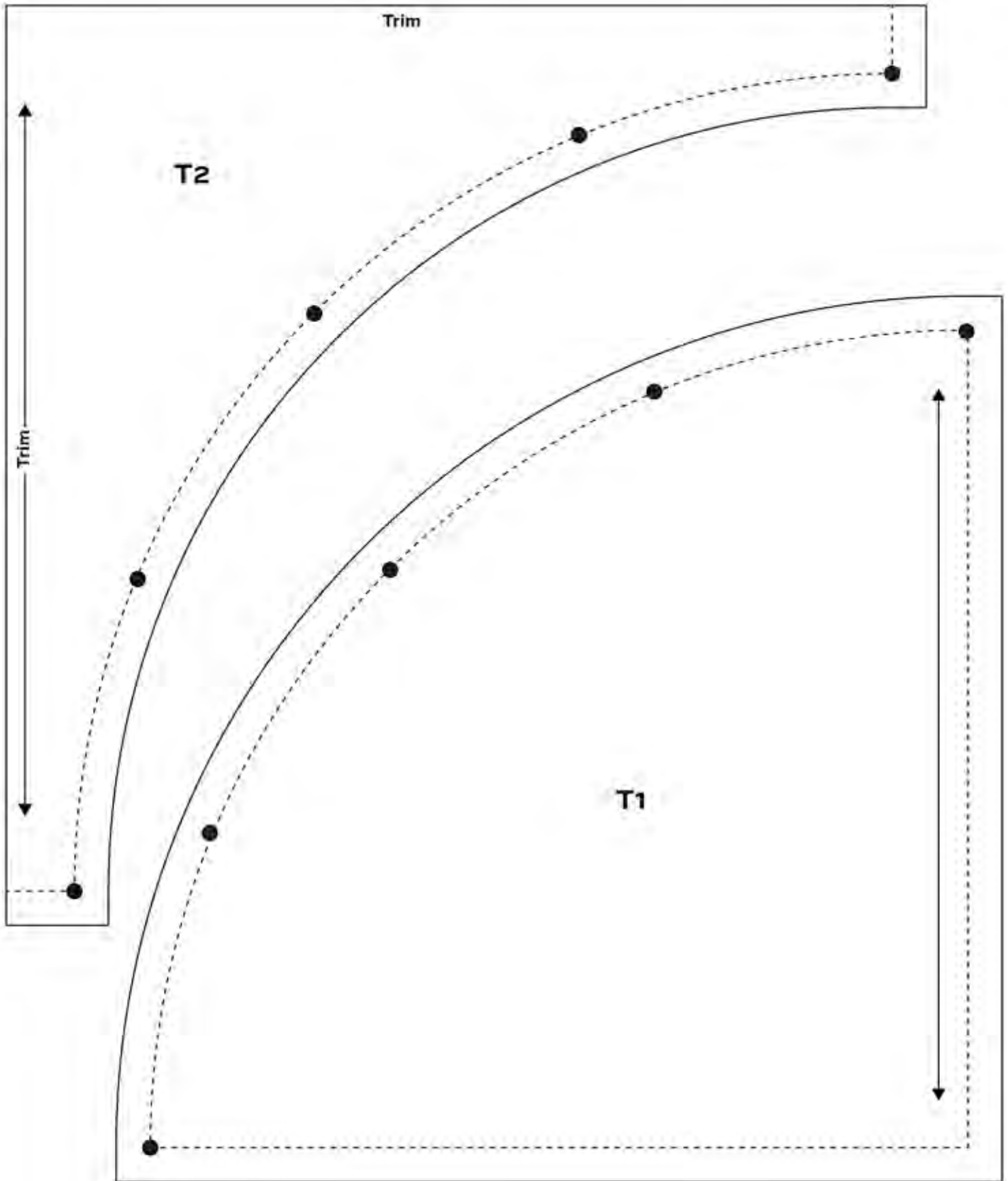
Finishing the Quilt

9. Layer the quilt with batting and backing and baste. Quilt in the ditch around borders and block patches. Quilt curved patches and outer border as you wish. Bind to finish the quilt.

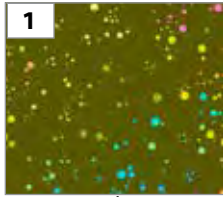


Quilt Assembly

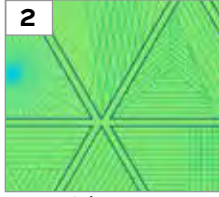
L.F. Party Quilt



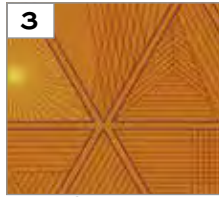
40 + 40 108S GIUCY GIUCE



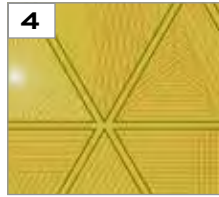
1344-VX*



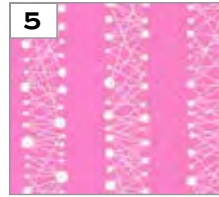
1391-G*



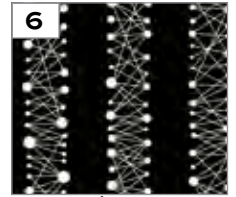
1391-O



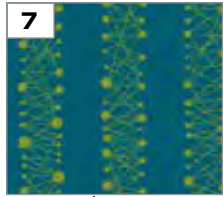
1391-Y



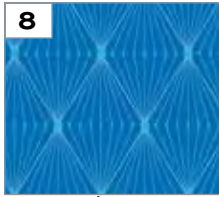
1392-E



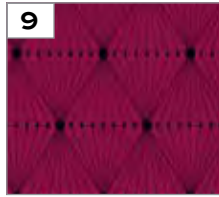
1392-K*



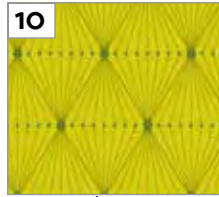
1392-T*



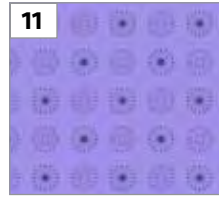
1393-B*



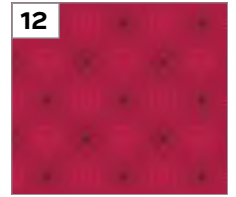
1393-R



1393-Y*



1394-P



1394-R



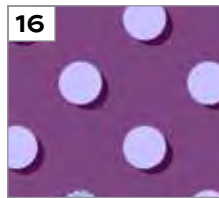
1394-Y



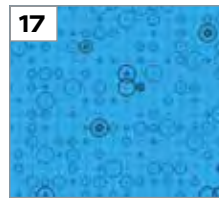
1395-B*



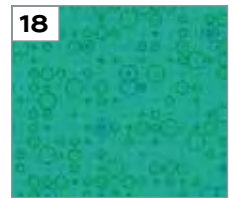
1395-O



1395-P



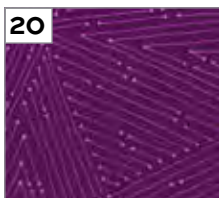
1396-B*



1396-G*



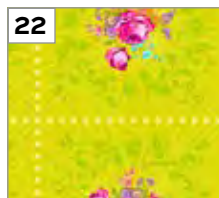
1396-O



1397-P



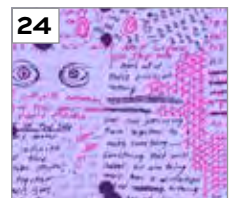
1398-V*



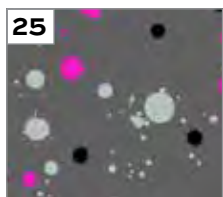
1399-G*



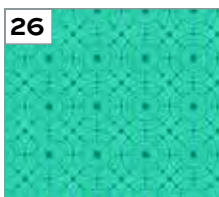
1400-P



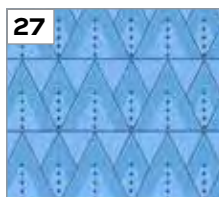
1401-P



1402-C*



1403-T*



1404-B*



1405-C*



1405-Y



1406-G*



1407-E



1407-L



1408-E



1409-K*



1409-L*



1410-E



1411-R



1412-B*



1413-B*



1414-B*

*Indicates fabrics not used in quilt pattern.
Fabrics shown are 25% of actual size.

Additional fabric from 40 108s by Giucy Giuce



AW-1513-K



AW-1514-E*



AW-1515-G*

Free Pattern Download Available

1384 Broadway, 24th Floor, New York, NY 10018

Tel. (800) 223-5678 • andoverfabrics.com

